



PARADYZ
CERAMIKA

TECNIQ

COLLECTION OF CERAMIC TILES

GLAZED PORCELAIN



BIANCO
4/5



BEIGE
6/7



GRYS
8/11



GRAFIT
12/13



SILVER
16/17

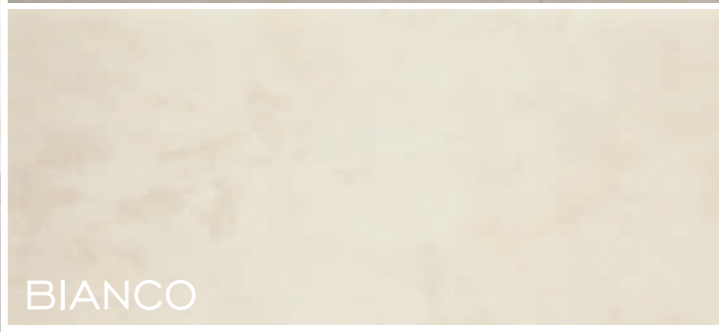


NERO
18/19

TECNIQ

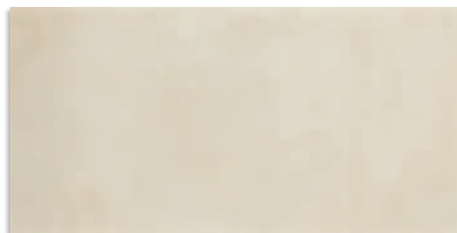


TECNIQ

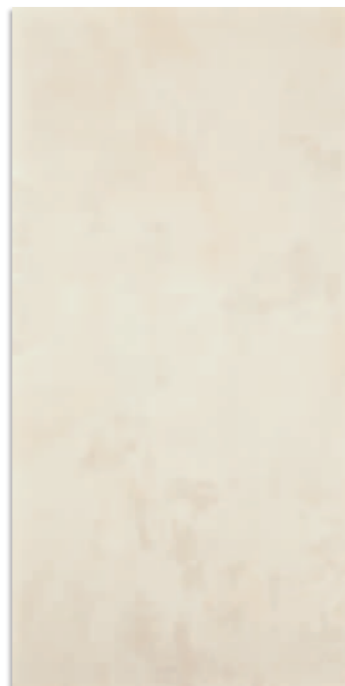


BIANCO

BEIGE



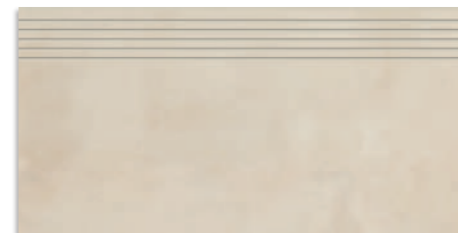
TECNIQ BIANCO matt/semi-polished 59,8x29,8



TECNIQ BIANCO matt/semi-polished 89,8x44,8



TECNIQ BIANCO matt/semi-polished 59,8x59,8



TECNIQ BIANCO stair tread matt/semi-polished 59,8x29,8

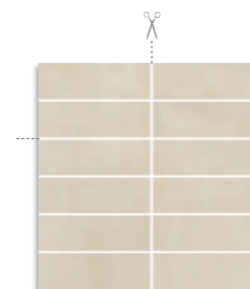


TECNIQ BIANCO skirting board matt/semi-polished 59,8x7,2



TECNIQ BIANCO listel mix stripes 71x14,8

R10
4
2100



TECNIQ BIANCO cut mosaic
matt/semi-polished 29,8x29,8
(cube 4,8x14,8)



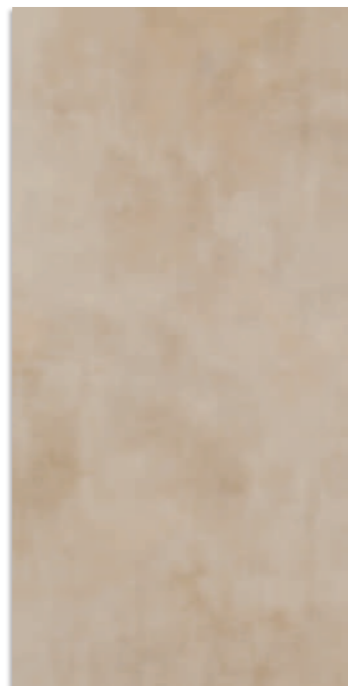
R10 SEMI-POLISHED TILES R10 MATT TILES

5 >12000 SEMI-POLISHED TILES 5 >12000 MATT TILES

Each tile is unique in comparison to the model tile.
Tonal differences are likely to occur.



TECNIQ BEIGE matt/semi-polished 59,8x29,8



TECNIQ BEIGE matt/semi-polished 89,8x44,8



TECNIQ BEIGE matt/semi-polished 59,8x59,8



TECNIQ BEIGE stair tread matt/semi-polished 59,8x29,8

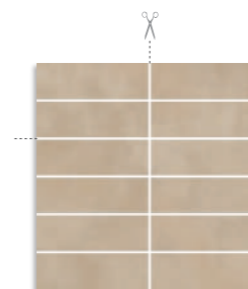


TECNIQ BEIGE skirting board matt/semi-polished 59,8x7,2



TECNIQ BEIGE listel mix stripes 71x14,8

R10
4
6000



TECNIQ BEIGE cut mosaic
matt/semi-polished 29,8x29,8
(cube 4,8x14,8)



R10 SEMI-POLISHED TILES R10 MATT TILES

5 >12000 SEMI-POLISHED TILES 4 6000 MATT TILES

Each tile is unique in comparison to the model tile.
Tonal differences are likely to occur.



TECNIQ



GRYS



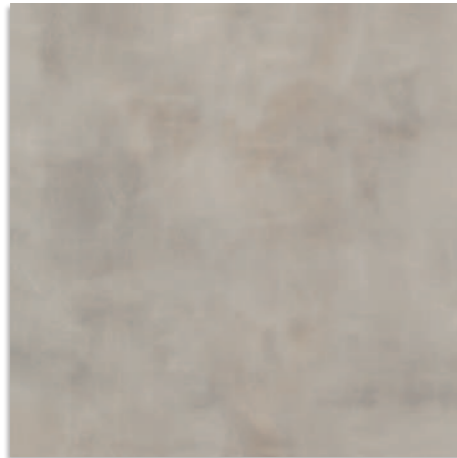
GRAFIT



TECNIQ GRYS matt/semi-polished 59,8x29,8



TECNIQ GRYS matt/semi-polished 89,8x44,8



TECNIQ GRYS matt/semi-polished 59,8x59,8



TECNIQ GRYS stair tread matt/semi-polished 59,8x29,8

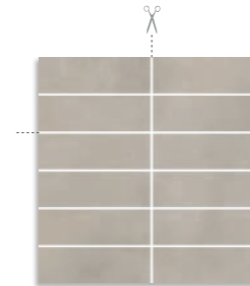


TECNIQ GRYS skirting board matt/semi-polished 59,8x7,2



TECNIQ GRYS listel mix stripes 71x14,8

R10
4
2100



TECNIQ GRYS cut mosaic
matt/semi-polished 29,8x29,8
(cube 4,8x14,8)



R10 SEMI-POLISHED TILES R10 MATT TILES

4 SEMI-POLISHED TILES 5 MATT TILES
6000 >12000

Each tile is unique in comparison to the model tile.
Tonal differences are likely to occur.



TECNIQ GRAFIT matt/semi-polished 59,8x29,8



TECNIQ GRAFIT matt/semi-polished 59,8x59,8



TECNIQ GRAFIT matt/semi-polished 89,8x44,8



TECNIQ GRAFIT stair tread matt/semi-polished 59,8x29,8

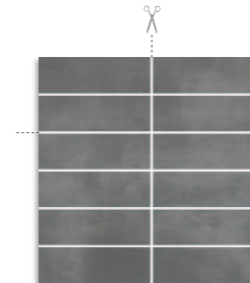


TECNIQ GRAFIT skirting board matt/semi-polished 59,8x7,2



TECNIQ GRAFIT listel mix stripes 71x14,8

R10
3
750



TECNIQ GRAFIT cut mosaic
matt/semi-polished 29,8x29,8
(cube 4,8x14,8)



R10 SEMI-POLISHED TILES R10 MATT TILES

4 SEMI-POLISHED TILES 4 MATT TILES
2100 2100

Each tile is unique in comparison to the model tile.
Tonal differences are likely to occur.



TECNIQ



SILVER

NERO



TECNIQ SILVER matt/semi-polished 59,8x29,8



TECNIQ SILVER matt/semi-polished 89,8x44,8



TECNIQ SILVER matt/semi-polished 59,8x59,8



TECNIQ SILVER stair tread matt/semi-polished 59,8x29,8

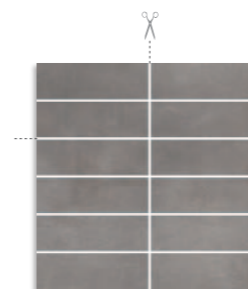


TECNIQ SILVER skirting board matt/semi-polished 59,8x7,2



TECNIQ SILVER listel mix stripes 71x14,8

R10
4
2100



TECNIQ SILVER cut mosaic
matt/semi-polished 29,8x29,8
(cube 4,8x14,8)



R10 SEMI-POLISHED TILES R10 MATT TILES

4 SEMI-POLISHED TILES 4 MATT TILES
2100 6000

Each tile is unique in comparison to the model tile.
Tonal differences are likely to occur.



TECNIQ NERO matt/semi-polished 59,8x29,8



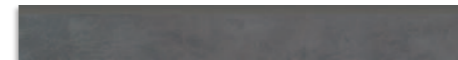
TECNIQ NERO matt/semi-polished 89,8x44,8



TECNIQ NERO matt/semi-polished 59,8x59,8



TECNIQ NERO stair tread matt/semi-polished 59,8x29,8

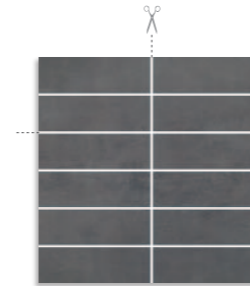


TECNIQ NERO skirting board matt/semi-polished 59,8x7,2



TECNIQ NERO listel mix stripes 71x14,8

R9
3
750



TECNIQ NERO cut mosaic
matt/semi-polished 29,8x29,8
(cube 4,8x14,8)



R10 SEMI-POLISHED TILES

R10 MATT TILES

3
750 SEMI-POLISHED TILES

3
750 MATT TILES

Each tile is unique in comparison to the model tile.
Tonal differences are likely to occur.



Finished products packaging

	Size [cm]	No. tiles in box	Amount m ² in a box	Weight of the box	Amount on a pallet	Palette weight [kg]
Base tiles	59,8x29,8x1	8	1,43	32,32	45,76 m ²	1034,18
	59,8x59,8x1	5	1,79	40,45	42,96 m ²	995,9
	89,8x44,8x1	3	1,21	27,35	21,78 m ²	517,23
Stair-tread	59,8x29,8x1	4	-	16,8	208 pcs	898,6
Skirting board	59,8x7,2x1	10	-	10,5	720 pcs	781
Listel mix stripes	71x14,8x1	5	-	9,5	150 pcs	310
Mosaic	29,8x29,8x1	7	-	14	252 pcs	529

Symbol explanation



Wall tiles



Floor tiles

R10

Slip resistance

3

1500 Porcelain Enamel Institute (PEI) Abrasion rating / Number of rotations



Frost resistance



Rectified tiles. Rectification is a method of mechanical processing which consists in milling tile edges at a right angle to their surface. As a result, the elements obtained may be assembled without worrying about differences in size. In the rectification process tiles from the given batch all acquire the same size (with accuracy to 0.2 mm). This solution also allows to obtain even tile surface due to minimal joint thickness.



Tonal tiles – each tile is unique in comparison to the model tile. Tonal differences are likely to occur. Tiles are packed at random.



PARADYŻ
CERAMIKA

CERAMIKA PARADYŻ SP. Z O.O.
UL. PIOTRKOWSKA 61, 26-300 OPoczno, Poland
TEL. +48 (44) 736 41 00, FAX +48 (44) 736 41 06
EXPORT WEST +48 (44) 736 42 75, 736 42 76

WWW.PARADYZ.COM